

**Pennsylvania Department of Human Services
Office of Children, Youth and Families**

P.O. Box 2675
Harrisburg, PA 17105-2675

***For more information about
the conference, contact:***

Beth Duzey

*Diakon Lutheran Social Ministries
& Family Design Resources
888-793-2512 (toll free)
717-558-1227*

or visit our website:

www.diakon-swan.org



*statewide adoption and permanency network
independent living services*

**REGISTRATION
MATERIALS
ENCLOSED**

24th Annual Pennsylvania Permanency Conference
Bravery • Courage • Triumph



**June 15-17, 2016 • Kalahari Resorts & Conventions
Pocono Manor, PA**

Conference at a Glance

WEDNESDAY, JUNE 15

12:00 p.m.

Conference Registration Begins

1:00 p.m.

Child / Teen Care Begins

1:30 – 3:00 p.m.

Conference Opening
Welcome and Keynote Address
SWAN Advisory Committee Award

3:15 – 4:45 p.m.

Workshop Session 1

4:45 – 5:15 p.m.

Break / Networking Time

4:30 – 6:00 p.m.

Pre-Banquet Reception for Honorees

6:00 p.m.

Recognition Banquet

8:30 p.m.

Child / Teen Care Ends

THURSDAY, JUNE 16

8:00 a.m.

Conference Registration Begins

8:30 a.m.

Child / Teen Care Begins

9:00 a.m. – 12:15 p.m.

Institute Session 1

OR

9:00 – 10:30 a.m.

Workshop Session 2

10:45 a.m. – 12:15 p.m.

Workshop Session 3

12:15 – 2:00 p.m.

Lunch (On Your Own)

2:00 – 5:15 p.m.

Institute Session 2

OR

2:00 – 3:30 p.m.

Workshop Session 4

3:45 – 5:15 p.m.

Workshop Session 5

5:30 p.m.

Child / Teen Care Ends

6:00 – 9:30 p.m.

Family Fun Night

FRIDAY, JUNE 17

8:00 a.m.

Conference Registration Begins

Child / Teen Care Begins

8:30 – 10:00 a.m.

Workshop Session 6

10:00 – 10:30 a.m.

Hotel Checkout Break

10:30 a.m. – 12:00 p.m.

Conference Closing and Keynote Address

12:00 p.m.

Adjourn

12:30 p.m.

Child / Teen Care Ends

General Information

Purpose

The 24th Annual Pennsylvania Permanency Conference, *Bravery • Courage • Triumph*, focuses on ways families and professionals from all aspects of the child welfare system can support one another and work together to achieve permanent connections for all children and youth.

The conference serves as a forum to train participants who will prepare children and families for their journey through the child welfare system towards permanency. The conference is designed to educate and support current and prospective foster and adoptive families, kinship care providers, permanent legal custodians, attorneys, child welfare professionals and others with a vested interest in permanency for children. The conference is a focal point for networking and sharing information to increase the knowledge base on the issues for children and youth in special needs adoptions and permanency.

Audience

The conference is designed for current and prospective foster and adoptive families as well as families providing other permanency options such as kinship care or permanent legal custodianship, attorneys, mental health professionals, independent living professionals, public and private agency professionals and the children on behalf of whom they work.

Session Descriptions

Each conference session is described in this brochure. The session categories and target audiences for the workshops and institutes are listed below.

Session Categories:

- Foundational
- Traditional
- Innovative

Target Audiences are:

- Families
- Advocates
- Permanency Professionals
- Child Welfare Workers
- Legal Professionals
- Independent Living Professionals

Continuing Education Credits, Continuing Legal Education Credits and Certificates of Training

Approval is pending for continuing education credits for social workers through the University of Pittsburgh and continuing legal education credits through the Pennsylvania Continuing Legal Education Board. Certificates of training will be available.

Hotel Information

Accommodations

Kalahari Resorts & Conventions is located at 250 Kalahari Blvd., Pocono Manor, PA 18349. Hotel reservations must be made directly by calling 877-525-2427. Special rates have been arranged for conference participants. Mention the code "2016 Permanency Conference" to receive the flat rate of \$149/night (plus applicable taxes). Rooms comfortably sleep four, with the option of two additional occupants at a charge of \$25/person/night. Check-in time at the Kalahari is 4:00 p.m. Check-out time is 11:00 a.m.

Accessibility

Because we want each participant to have the most enjoyable and accessible experience possible, please let us know what you need before you arrive by completing the special needs section of the conference registration form.

Registration Information

Conference Registration

To register for the conference, please complete the registration form included in this brochure or register online at www.diakon-swan.org. **The last day for Early Bird Registration is April 29, 2016.** Any registrations postmarked after that date will receive the regular registration rate. Preregistered attendees will receive a name badge, banquet and Family Fun Night dinner tickets, a program and other materials at the registration area. Confirmation emails will be sent to those who register by April 29, 2016. **The last day to register is May 12, 2016. Walk-in registration is accepted on-site dependent on availability and is not guaranteed.**

Conference registration will be held:

Wednesday, June 15	12:00 p.m. – 3:45 p.m.
Thursday, June 16	8:00 a.m. – 4:45 p.m.
Friday, June 17	8:00 a.m. – 8:30 a.m.

Cancellation and Refund Policy

Cancellations received after April 29, 2016 will be assessed a \$25 processing fee.

Any session may be cancelled or rescheduled because of unforeseen circumstances. Schedule changes and cancellations will be posted at the registration area and noted in the program distributed at the conference.

Conference Questions

If you have questions about registration, child care, accessibility, directions or other logistical considerations, please contact:

Beth Duzey, Conference Coordinator, Diakon/FDR

Phone: 717-558-1227

Toll Free: 888-793-2512

Email: bduzey@diakon-swan.org

Conference Opening

We Rock

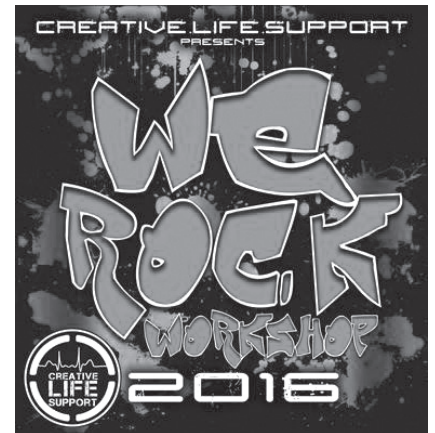
The 2016 Pennsylvania Permanency Conference is pleased to have the We Rock Workshop as part of the opening Keynote Session.

For the past six years, the Allegheny County Department of Human Services has worked with Creative.Life.Support, the nonprofit arm of Mr. Smalls Theatre in Pittsburgh, Pennsylvania, to offer the We Rock Workshop to current and former foster youth. Through this program, developed through dialogue between Liz Berlin (performer, recording artist, entrepreneur and educator) and Pennsylvania Supreme Court Justice Max Baer, Liz guides students through a study of songwriting, recording, performance and the music industry from the inside out. As a founding member of the multi-platinum band Rusted Root (formerly Island/Def Jam), Liz has gained experience and insight to share with aspiring musicians.

The We Rock Workshop encourages students to open up creatively through music, exploring the creation of music and looking into the future for ways to have

musical meaning in their lives. Students participate in eight weeks of recording workshops at Mr. Smalls Recording Studio, during which they write and record original music, followed by ten weeks of performance workshops and rehearsals to prepare for their final concert. It all culminates with the recording of original

songs created by the participants and a final showcase of their talents. Each student walks away with a CD of the songs that they collaborated on. Special thanks to JoAnn Hannah from the Allegheny County Department of Human Services for making the appearance of We Rock Workshop possible.



Michelle Nauman-Brown

Michelle Nauman-Brown is a Youth Advocate with Family Design Resources, Inc., where she collaborates with program staff to advocate for the

permanency needs of older youth in out-of-home care. As a former foster youth, Michelle and her story, as told through a video lifebook used in presentations and trainings, have impacted many professionals serving Pennsylvania's waiting children.

Michelle shares her story in an effort to increase permanency for children in care and to encourage and inform older youth on the benefits of staying in foster care until age 21. Placed in foster care as a toddler, Michelle was emancipated at age 18. While in care she used resources, including SWAN child preparation services, to overcome loss of connection with her birth family, multiple placements and a dissolved adoption. Michelle identifies as a success, not a statistic, and openly shares her story in the hope of making a difference in the lives of others.

Conference Opening

Wednesday, June 15, 2016, 1:30 p.m.

Youth and You: Converting Obstacles to Triumph

Driven to impact outcomes for older youth in foster care, Michelle Nauman-Brown recounts the adolescent struggles that kept her from permanency and ultimately fueled her success. "Michelle's Story" relates the need for every child's voice to be sought and heard.

Workshop

Wednesday, June 15, 2016, 3:15–4:45pm

Leveling the Playing Field: Partnering with Youth in Permanency Planning

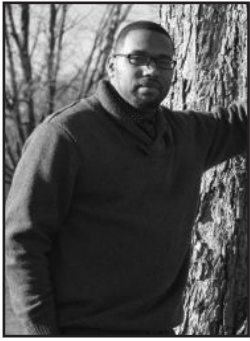
Permanency planning, particularly for older youth, involves a partnership between the youth and caseworker. This workshop will explore the caseworker's role in creating that partnership and striving to overcome the emotional and mental obstacles that may prevent a youth from establishing healthy connections. (See W-WK7 on page 6 for additional information.)

Teen Keynote Presentation

From Two Directions We Build Connections

Ms. Nauman-Brown will meet with participants of the teen program on Thursday, June 16, 2016. Fear, suspicion, anger, pride — all are emotions that can keep a youth from "using their voice" in matters that concern them. Employing the cycle of youth engagement, this interactive presentation will empower youth to provide meaningful feedback to create joy, satisfaction and success.

Conference Closing



Jamole Callahan

Jamole Callahan, LINK22 Executive Director, spent six years in foster care, where he experienced multiple moves before he emancipated at age 18. He is a trainer with the Ohio Child Welfare Training Program; a consultant for the National Resource Center for Youth Development; a pre-service trainer for private agencies; and an Ohio Reach, My Very Own Blanket, and UMCH Family

Services board member. A national motivational speaker, Jamole has a vision for empowering resource parents, caseworkers and foster care youth and alumni to succeed.

Conference Closing

Friday, June 17, 2016, 10:30 a.m.

Helping our Teens Become Dream Catchers

All too often it's hard to find forever families for teens. In this interactive talk, we will explore together how important it is for our teens to have examples of bravery, courage, and triumph! As a former foster youth who was never adopted, I'd dream about the possibilities.

Most dream of having a family they can call their own. Let's help them catch that dream. Let's give our youth a hand in defying gravity!

Special Conference Features & Events

Recognition Banquet

Guest Mistress of Ceremonies will be **Cindi Horshaw**, MSW, LSW, the director of the Bureau of Policy, Programs and Operations within the Department of Human Services, Office of Children, Youth and Families (OCYF). Cindi previously worked as a caseworker at Dauphin County Children and Youth for eight years. In 2002, Cindi began working at OCYF focusing primarily on residential and day treatment facilities. She previously worked for the Bureau of Juvenile Justice Services providing oversight to the Youth Development Centers/Youth Forestry Camps in Pennsylvania, as well as being a supervisor in the Program Policy Unit at OCYF focusing on Child Protective Services, General Protective Services, adoption and foster care issues.

Recognition awards will be given during the banquet on Wednesday, June 15, at 6:00 p.m. for:

- Permanency Professional
- Permanency Teamwork
- Independent Living Professional
- Permanent Family
- Permanency Advocate
- County Collaborative
- Philanthropy
- Youth Advocate

Family Fun Night

On Thursday, June 16, starting at 6 p.m., share food and information with other families who support permanency for children! A buffet-style dinner will be served until 7:30 p.m., but stay longer to mingle and network before you explore the Kalahari's many delightful forms of entertainment. **Participants with hotel reservations at the Kalahari receive access to the indoor waterpark. Conference attendees without hotel reservations may purchase waterpark tickets for Family Fun Night at a discounted rate of \$25 (regularly \$50).** Use the registration form to confirm your participation in the Family Fun Night and to purchase extra meal and waterpark passes for guests, friends or children who are not registered for the conference or child/teen care.



W-WK1 Reactive Attachment Disorder and How to Deliver Services

Category - Traditional **Audience** - All

Working with reactive attachment disorder (RAD) youth can be very frustrating, and professionals may struggle to find the correct treatment methods. Participants learn to identify signs and symptoms of attachment issues and leave the seminar with new understanding, skills and interventions to assist in their most challenging cases.

Amy Swigart, *Inspiring Change*

W-WK2 Imagine Different: Innovative Family Alternatives to Institutions

Category - Innovative **Audience** - All

All children should grow up in families. The Imagine Different Coalition describes new ways to provide family-based alternatives to institutional care for children with developmental disabilities, including models from other states and recommendations recently made to Pennsylvania.

Rachel Mann, *Disability Rights Network of Pennsylvania* and **Liz Healey**, *The PEAL Center*

W-WK3 Post Adoption Contact Agreements - Best Interest of the Child

Category - Traditional **Audience** - All

An Adoption Legal Services Project attorney/mediator and a parents' attorney discuss the ins and outs of negotiating post-adoption contact agreements and how birth parents and adoptive parents can collaborate to serve the child's best interests.

Continuing Legal Education credits are pending approval.

Michael Wahlen, *Diakon/Family Design Resources* and **Gina Ziady**, *Allegheny County Bar Foundation*

W-WK4 The Changing Landscape of CSR

Category - Innovative **Audience** - Child Welfare Workers, Permanency Professionals, Independent Living Professionals

With the evolution of child specific recruitment (CSR) practices over the years, even experienced workers now face a variety of challenges. A panel of seasoned workers discuss some situations they've encountered, such as family searches, and what happens when services are not in place at the time of placement.

Dianne Ott and **Jon Douglas**, *Diakon/Family Design Resources*

W-WK5 ICWA: Identifying and Supporting Our Native American Families

Category - Innovative **Audience** - All

A panel reviews the Indian Child Welfare Act (ICWA), the latest guidelines released by the Bureau of Indian Affairs and other important resources to help maintain compliance, as well as discuss the importance of early searches for potential tribal eligibility — and the consequences of noncompliance.

Continuing Legal Education credits are pending approval.

Natalie Washine, **Lorelei Johnson** and **Rachel Meaker**, *Diakon/Family Design Resources*

W-WK6 A Compass During the Storm: The SOS Project

Category - Innovative **Audience** - Families, Child Welfare Workers, Permanency Professionals, Independent Living Professionals

The Securing Our Stability (SOS) Project provides targeted support and interventions to resource families in an effort to enhance their capacity and satisfaction, thus reducing placement disruptions. A vision of Adams County Children & Youth Services (CYS), this project combines strategies from Family Engagement, Family Finding, the 3-5-7 Model, Trauma-Focused Cognitive Behavior Therapy and *The Incredible Years*. A multidisciplinary team of county CYS and provider staff and families offer insights on how the project impacts resource families and their ability to provide stability for youth.

Kirsten Johnson, *Hempfield Behavioral Health* and **Sarah Finkey**, *Adams County Children and Youth Services*

W-WK7 Leveling the Playing Field: Partnering with Youth in Permanency Planning

Category - Traditional **Audience** - Child Welfare Workers, Permanency Professionals, Independent Living Professionals, Advocates, Legal Professionals

Permanency planning, particularly for older youth, involves a partnership between the youth and caseworker. This workshop explores the caseworker's role in creating that partnership and striving to overcome the emotional and mental obstacles that may prevent a youth from establishing healthy connections.

Michelle Nauman-Brown, *Family Design Resources, Inc.* and **Deb Gadsden** and **Sandra Bennett**, *Diakon / Family Design Resources*

Workshop Session 2 • Thursday, June 16, 2016 • 9:00 a.m. – 10:30 a.m.

- TH-WK1 “Till Death Do Us Part”: Sibling Relationships**
Category - Foundational **Audience** - Families, Child Welfare Workers, Permanency Professionals, Independent Living Professionals, Advocates
 Siblings share unique and complex relationships. Let’s examine the historic and ongoing roles they play in childhood, how they influence identity and how losing these relationships can have a significant impact on children’s views of the world and themselves.
Pam Wagner, Diakon/Family Design Resources
- TH-WK2 Triumph for Normalcy in the Dependency System: A Court Perspective**
Category - Innovative **Audience** - All
 Teenagers in the child welfare dependency system face many unique challenges as they try to fit in and experience the same age and developmentally appropriate activities enjoyed by their peers. A panel moderated by the Honorable Michael Sholley will provide realistic perspectives from former older youth and the professionals who work hard to ensure that “normal” teenage experiences are not missed while in care.
Continuing Legal Education credits are pending approval.
The Hon. Michael Sholley, Office of Children and Families in the Courts, Administrative Office of Pennsylvania Courts, Pennsylvania Supreme Court
- TH-WK3 Together We Succeed: A New Model for Parent Training**
Category - Innovative **Audience** - Families, Child Welfare Workers, Permanency Professionals, Independent Living Professionals
 This interactive session invites foster and adoptive families to ask questions and learn from each other by sharing their experiences. Presenters will guide the conversation and provide feedback and resources. **Families, please submit questions and topics you would like to discuss to eschmitt@chomepgh.org by June 1, 2016.**
Erika Schmitt and Constance Bach, The Children’s Home of Pittsburgh and Lemieux Family Center
- TH-WK4 College Planning 101: Families Working Together**
Category - Traditional **Audience** - Families, Child Welfare Workers, Permanency Professionals, Independent Living Professionals, Advocates
 Planning for college or post-secondary training is often challenging. This session explores tools and strategies to help families select the right schools, apply for financial aid and scholarships and prepare students for success after they enroll.
Stephen Eidson, University of Pittsburgh, The Pennsylvania Child Welfare Resource Center

Workshop Session 3 • Thursday, June 16, 2016 • 10:45 a.m. – 12:15 p.m.

- TH-WK5 How Post-Permanency Services Impact Children and Families**
Category - Traditional **Audience** - Families, Child Welfare Workers, Permanency Professionals, Independent Living Professionals, Legal Professionals
 How can we measure the true value of Post-Permanency services? Through various assessment tools and surveys, we have collected a wealth of data from families we serve in Pennsylvania that illustrates the long-term impact Post-Permanency services make on their lives.
Mike Kovacevic, Satoko Marquet and Lea Moyer, Diakon/Family Design Resources
- TH-WK6 Leading the Whole Self**
Category - Traditional **Audience** - Families, Child Welfare Workers, Permanency Professionals, Independent Living Professionals
 This workshop examines new ways for workers and parents to differentiate problematic behaviors from the true self of youth and help the youth to overcome wounds in their past.
Laurie Parke, Sand Castle Counseling and Sheri Miller
- TH-WK7 The Kaleidoscope of Child Preparation**
Category - Innovative **Audience** - Child Welfare Workers, Permanency Professionals, Independent Living Professionals
 Child Preparation practice has changed dramatically over the years with the enactment of various laws. Practice discussion covers issues that Child Preparation workers face, including increased birth parent involvement and reunification, and participants learn some Child Preparation activities that focus on various issues.
Dianne Ott, Diakon/Family Design Resources
- TH-WK8 Financial Aid 101 - Paying for Post-Secondary Education**
Category - Traditional, Innovative **Audience** - All
 A review of the complicated and ever-changing processes and information about applying for and receiving government funding for higher education, as well as tips for getting scholarships.
Linda Pacewicz and Marla Kane, Pennsylvania Higher Education Assistance Agency (PHEAA)

TH-IN1	<p>Transition Planning from Youth to Adult Category - Traditional Audience - Families, Advocates Receive training on helping older youth plan for life after high school. Learn what should be included in an individualized education program (IEP) and about more resources and information that can help students prepare for adulthood. Jamie Ray-Leonetti and Gabriella Labella, <i>Disability Rights Network of Pennsylvania</i></p>
TH-IN2	<p>Understanding Adoption Assistance Category - Foundational Audience - Families, Child Welfare Workers, Permanency Professionals, Independent Living Professionals It can be difficult to obtain information about adoption assistance for children with special needs in Pennsylvania. This course explains and clarifies what adoption assistance is, who is eligible, how to negotiate rates and much more. Continuing Legal Education credits are pending approval. Tara Hines and Lauren Cummings, <i>Department of Human Services, Office of Children, Youth and Families</i></p>
TH-IN3	<p>Working Personally and Effectively with Kinship Resource Families Category - Innovative Audience - Child Welfare Workers, Permanency Professionals, Independent Living Professionals, Legal Professionals, Advocates Being a kinship resource parent is a unique and often more challenging task than traditional resource parenting. This workshop presents methods to better train and support kinship resource parents for the difficult role they are taking on, sometimes reluctantly. Michael Caggese, <i>Westmoreland County Children's Bureau</i></p>
TH-IN4	<p>Dynamics of Courage Category - Traditional Audience - Families, Child Welfare Workers, Permanency Professionals, Independent Living Professionals, Advocates Courage and bravery are separate concepts. This session explores courage as it applies to resource parents, birth parents, foster children and professionals. Colleen Slebodnik and Annette Gross, <i>Wesley Spectrum Services</i></p>
TH-IN5	<p>Mental Health Treatment and Legal Advances (Right Prescription II) Category - Innovative Audience - All How can caseworkers, parents, advocates, and others collaborate with medical providers to develop trauma-informed mental health treatment plans for children in care? Learn legal strategies and best practices to manage treatment and psychotropic medication for children with mental health diagnoses. Continuing Legal Education credits are pending approval. Alyssa Cowan, <i>Diakon/Family Design Resources</i> and Garrett Sparks, <i>Western Psychiatric Institute and Clinic</i> and Courtney Potter, <i>KidsVoice</i></p>
TH-IN6	<p>Adoption Disruption and Dissolution: Defusing the Bomb Category - Traditional Audience - Child Welfare Workers, Permanency Professionals, Independent Living Professionals, Legal Professionals This workshop addresses recent research on disruption/dissolution and discusses how to prepare families to avoid a disruption and what to do when it is inevitable. Leonette Boiarski, <i>Madison Adoption Associates</i></p>
TH-IN7	<p>LGBTQ 101: Cultural Competency Category - Foundational Audience - All This training gives participants a better understanding of the lesbian, gay, bisexual, transgender and questioning communities and equips them to be more culturally competent when dealing with them. Topics covered include sexual orientation, gender identity, sexual identity, health disparities and discrimination. Andrew Granick, <i>Trehab</i></p>

Workshop Session 4 • Thursday, June 16, 2016 • 2:00 p.m. – 3:30 p.m.

- TH-WK9 Supporting the Next Generation: Connections Through Mentoring**
Category - Innovative **Audience** - Families, Child Welfare Workers, Permanency Professionals, Independent Living Professionals, Advocates
 This workshop explores creating, implementing and maintaining a mentoring program for Independent Living youth. The Project Hope Mentoring Program bridges the gap between community members and youth in the child welfare and juvenile justice system through individual and group mentoring.
Candice Reagan and Leasia Ayers-Caswell, Adams County Children and Youth Services
- TH-WK10 PAE and OCMI: Your Partners in Recruitment**
Category - Traditional **Audience** - Permanency Professionals, Independent Living Professionals
 Representatives from both the Pennsylvania Adoption Exchange (PAE) and the Older Child Matching Initiative (OCMI) shine light on how child recruiters can collaborate with them more efficiently and effectively and identify positive outcomes for youth in foster care.
Melanie Rehrig and Katie Juliana, Diakon Adoption and Foster Care, Russ McCurdy, Project STAR/The Children's Institute and Robert Brockman, Diakon/Family Design Resources
- TH-WK11 Current Drug Trends**
Category - Traditional **Audience** - All
 A drug and alcohol prevention expert explores the continuing problem of drugs and alcohol in Pennsylvania and across the country, reviewing recent trends and what to look for (signs, symptoms and paraphernalia), as well as how to help someone get treatment and talk with children about avoiding drugs and alcohol.
Stephanie Ferraro, Trehab
- TH-WK12 Parenting During the Adolescent Years**
Category - Foundational, Traditional **Audience** - Families, Child Welfare Workers, Permanency Professionals, Independent Living Professionals, Advocates
 Adolescence creates new challenges for parents; what worked once is now obsolete. This workshop examines adolescent issues and how parents can support their teen's growth and development.
Bob Brinker, ParentWISE Program of Family Services of Western Pennsylvania

Workshop Session 5 • Thursday, June 16, 2016 • 3:45 p.m. – 5:15 p.m.

- TH-WK13 Teaching Teens Life Skills: The "Right" Fit**
Category - Innovative **Audience** - Child Welfare Workers, Permanency Professionals, Independent Living Professionals
 This workshop focuses on developing life skills programs for youth ages 14–21. It covers different types of styles, structures and forms of life skills instruction, and participants interact and learn activities to use with their teens.
Amanda Knaub, Adams County Children and Youth Services
- TH-WK14 Acknowledging and Understanding Youth Perspectives**
Category - Foundational **Audience** - Families, Child Welfare Workers, Permanency Professionals, Independent Living Professionals, Advocates
 The workshop presents filmed interviews with youth in foster care discussing issues of trust and their experiences in "the system," followed by a group discussion aimed at identifying methods for superior communication and advocacy.
Nicolas Landon and Karleen Vogt, Family Pathways and Melanie Rehrig, Diakon Adoption and Foster Care
- TH-WK15 The Voice Behind the Scars**
Category - Foundational **Audience** - Families, Child Welfare Workers, Permanency Professionals, Independent Living Professionals
 Self-injury through cutting is becoming more and more prevalent among teenagers. This workshop explores what self-injury is, why people engage in cutting behavior, the emotions behind it, myths about it and how to support someone who is actively engaging in self-harm behavior or has done so in the past.
Karen Mummau, Community Services Group
- TH-WK16 Children of Addicts: How Trauma Impacts Child Well-Being**
Category - Foundational, Traditional **Audience** - All
 This workshop looks at the traumatic impact of coming from chemically-dependent homes on children who enter the system.
Bob Brinker, ParentWISE Program of Family Services of Western Pennsylvania and Beth Bitler, Pennsylvania Family Support Alliance

- TH-IN8 The RADish Patch; From Surviving to Thriving**
Category - Traditional Audience - All
 This presentation identifies strategies for families who love a child with reactive attachment disorder (RAD). Using techniques cultivated in Choice Theory®, presenters offer ideas to enhance advocacy and self-care and promote healing and peace within their families.
Regina and Nicholas Fike, *Regina Fike Training and Consulting Services*
- TH-IN9 Mindfulness Techniques for Stress Management**
Category - Traditional Audience - All
 Mindfulness is the use of meditation to focus attention and awareness. Many of us have the impression that our family, work and society rob us of all our time, so it's important to practice mindfulness techniques constantly — but that's easier said than done. We review the three primary ways we refer to our states of mind and teach techniques and activities that can assist families and employers who are challenged with vicarious trauma and/or stress in their lives.
Randa Bieber and George Rajkowski, *Department of Human Services, Bureau of Juvenile Justice*
- TH-IN10 Hot Topics in Child Welfare, 2016**
Category - Traditional Audience - All
 Discuss current issues in child welfare law with experienced attorneys who handle child welfare and termination of parental rights cases from the perspectives of children, parents and agencies. We'll focus on hot topics, including recent court decisions and legislative changes.
Continuing Legal Education credits are pending approval.
Ilene Dubin and Jennifer Gelet, *Diakon/Family Design Resources*; **Kathleen Creamer**, *Community Legal Services* and **Marisa McClellan**, *Dauphin County Solicitor*
- TH-IN11 Developmentally Appropriate Freedoms and Normalcy**
Category - Innovative Audience - All
 Normalcy is important to the development and healing of youth in foster care. This presentation outlines recommendations made from the Pennsylvania Youth Advisory Board for supporting the needs of older youth in care and assisting them with their transition to adulthood. Participants engage with these recommendations and learn how developmentally appropriate freedoms connect with their work.
Barbara Huggins, *University of Pittsburgh, The Pennsylvania Child Welfare Resource Center*
- TH-IN12 Starting a Family Profile "Toolbox"**
Category - Traditional Audience - Permanency Professionals, Independent Living Professionals
 Verbal interviewing can only go so far in getting to know and assessing a family. Come and learn some activities that can be completed with families during the homestudy process to assess multiple facets of the family unit and structure.
Jordan Shoenberger, *Three Rivers Adoption Council*
- TH-IN13 You Want Us to Do What?**
Category - Innovative Audience - All
 The child welfare system is changing! We explore innovative ideas and practical tools for families, counties, affiliates and legal professionals, with a focus on family education, professional teamwork, birth family partnerships, permanency options and resources and barriers from a human perspective.
Heather Gillette and AJ Zehner, *Diakon Adoption and Foster Care*
- TH-IN14 How to Maximize the School Year: Working with Educational Staff**
Category - Traditional Audience - All
 Trusting collaboration between parents and educational professionals will improve a child's ability to be successful in school — a success measured not in grade point averages, but in improved responsibility, behavioral consistency between home and school and deeper relationships.
Jeff Merkert and Faye Hall, *Jewish Family Service of Greater Harrisburg*

F-WK1	<p>A Gardener's Guide to Cultivating Lives Forever <i>Category - Traditional Audience - Families</i> An interactive session that asks resource parents to imagine themselves as gardeners of the children placed in their care. Nakiba Quarles, Philadelphia Resource Parent Association</p>
F-WK2	<p>Life in Limbo: A Roleplay About Life in Foster Care <i>Category - Innovative Audience - All</i> Welcome to an innovative roleplay that provides meaningful ideas for making children in foster care feel valued and deeply cared for. This will really get us thinking, "How can we improve the lives of children in foster care?" For the roleplay, you can be a birth parent, foster parent, child in care or an observer. This training may elicit emotions, but within a safe and respected environment. Shannon Kelley and Jill Schmidt, The Bair Foundation</p>
F-WK3	<p>Trauma Exposure in the Child Welfare System: Supportive Strategies for Self-Care and Professional Preservation <i>Category - Traditional Audience - All</i> Exposure to clients' traumatic experiences can impact child welfare professionals both personally and professionally. Participants learn about vicarious trauma and related concepts such as compassion fatigue and burnout, as well as supportive self-care strategies to maintain professional competency and enhance personal well-being. Allie Dolan and Laurie Ayler, Support Center for Child Advocates</p>
F-WK4	<p>Courage in Action: The Full Disclosure Conversation <i>Category - Traditional Audience - All</i> Full disclosure conversations are a critical part of concurrent planning practice; however, the thought of having such serious discussions can be intimidating. This workshop offers participants useful information to plan for and conduct these crucial dialogues. Laura Borish and Michael McClure, University of Pittsburgh, The Pennsylvania Child Welfare Resource Center</p>
F-WK5	<p>What's Love Got to Do With It? <i>Category - Innovative Audience - All</i> The unique sexual health education needs of trauma-exposed foster youth are largely overlooked. Together, workshop panelists and training participants explore various aspects of foster youth sexual health and discuss specialized curricula and approaches to implementation. Adrienne Mitchell, Family Design Resources, Inc.</p>
F-WK6	<p>What You Need to Know About the Reasonable and Prudent Parent Standard <i>Category - Traditional Audience - All</i> Giving children in out-of-home care access to activities that promote normalcy requires a high degree of communication and coordination among caregivers and professionals working toward permanency. Learn how to support implementation of important new laws that offer children in placement settings opportunities for a wide range of extracurricular and enriching experiences. Continuing Legal Education credits are pending approval. Bernadette Bianchi, Pennsylvania Council of Children, Youth and Family Services (PCCYFS) and Christine Reese, University of Pittsburgh, The Pennsylvania Child Welfare Resource Center</p>
F-WK7	<p>Trauma and the Child Welfare System Mitigate the Power! <i>Category - Foundational Audience - All</i> Are you working for or within the child welfare system? A 20-year child welfare veteran explains how to navigate the legal waters and manage the impact of secondary trauma on your work and life. Sara Miller, Bucks County Children and Youth Social Services Agency</p>
F-WK8	<p>Every Breath We Take - The Empowerment of Yoga (Redux) <i>Category - Innovative Audience - All</i> This workshop leads participants through the empowering and therapeutic practice of hatha yoga and guided meditation, followed by a facilitated question-and-answer discussion. Edward Stancombe, Therapeutic Yoga Program, LLC</p>

Join us at Family Fun Night!

Thursday, June 16, 2016 • 6:00 p.m. – 9:30 p.m.



The Pennsylvania Permanency Conference is all about our families, and this is the perfect occasion for you to come together and celebrate your shared efforts toward permanency.



Beginning with a buffet dinner in the North Foyer from 6-7:30 p.m., meet, mingle and share stories and information with other families. Then head off on a thrilling African adventure at the Kalahari's massive indoor Waterpark, visit the arcade or spa, go shopping — there are dozens of activities to entertain everyone. You bring your family, we'll provide the fun!



Please see Page 5 for additional information.



Conference Registration Form

To register for the conference, please complete this form or register online at www.diakon-swan.org. Please note the dates for Early Bird and Regular Registrations. Preregistered persons will receive a name badge, banquet and Family Fun Night dinner tickets, a program and other materials at the registration area. Confirmation emails will be sent to those who register by April 29, 2016. For questions about completing the form, please email iwertz@diakon-swan.org. **The last day to register is May 12, 2016. Walk-in registration is dependent on availability and is not guaranteed.**

****Please type or print clearly. Please complete one form per person.**

First Name	Middle Initial	Last Name	Professional Title
Agency Affiliation		Department	Email
Address (agency participants use company address)		City	State
			Zip Code
Daytime Phone		Evening Phone	Cellphone

Please check all that apply: I am a ☐ Child Welfare Worker ☐ Advocate ☐ Legal Professional ☐ Permanency Professional
☐ Family ☐ Independent Living Professional ☐ Other _____

Special Needs: We want each participant to have the most enjoyable and accessible experience possible. Please let us know your special need in advance.

Specify needs: _____

Specify dietary restrictions: _____

Workshop Session Selection: To help us determine space requirements, please mark your preferred sessions in the appropriate spaces. Any session may be cancelled or rescheduled because of unforeseen circumstances. Schedule changes or cancellations will be posted at the registration area and noted in the final program that will be distributed at the conference.

Wednesday, June 15 (Choose one)

Workshop 1 • 3:15 – 4:45 p.m.

☐ W-WK1 ☐ W-WK2 ☐ W-WK3 ☐ W-WK4 ☐ W-WK5 ☐ W-WK6 ☐ W-WK7

Thursday, June 16 Morning (Choose two workshops — one from Workshop 2 **AND** one from Workshop 3 — **OR** one Institute)

Workshop 2 • 9:00 – 10:30 a.m.

☐ TH-WK1 ☐ TH-WK2 ☐ TH-WK3 ☐ TH-WK4

AND

Workshop 3 • 10:45 a.m. – 12:15 p.m.

☐ TH-WK5 ☐ TH-WK6 ☐ TH-WK7 ☐ TH-WK8

OR

Institute 1 • 9:00 a.m. – 12:15 p.m.

☐ TH-IN1 ☐ TH-IN2 ☐ TH-IN3 ☐ TH-IN4 ☐ TH-IN5 ☐ TH-IN6 ☐ TH-IN7

Thursday, June 16 Afternoon (Choose two workshops — one from Workshop 4 **AND** one from Workshop 5 — **OR** one Institute)

Workshop 4 • 2:00 – 3:30 p.m.

☐ TH-WK9 ☐ TH-WK10 ☐ TH-WK11 ☐ TH-WK12

AND

Workshop 5 • 3:45 – 5:15 p.m.

☐ TH-WK13 ☐ TH-WK14 ☐ TH-WK15 ☐ TH-WK16

OR

Institute 2 • 2:00 – 5:15 p.m.

☐ TH-IN8 ☐ TH-IN9 ☐ TH-IN10 ☐ TH-IN11 ☐ TH-IN12 ☐ TH-IN13 ☐ TH-IN14

Friday, June 17 (Choose one)

Workshop 6 • 8:30 – 10:00 a.m.

☐ F-WK1 ☐ F-WK2 ☐ F-WK3 ☐ F-WK4 ☐ F-WK5 ☐ F-WK6 ☐ F-WK7 ☐ F-WK8

Registration Options

Please complete one form per person

OPTION 1: ENTIRE CONFERENCE REGISTRATION JUNE 15, 16, 17 (Includes two continental breakfasts, two afternoon breaks, Recognition Banquet, Family Fun Night dinner, opening and closing keynote general sessions and up to six concurrent workshops)

EARLY BIRD (postmarked on or before April 29, 2016)

- ☐ \$180.00 – Agency-affiliated or other professional
☐ \$100.00 – Parenting couple (two parents from the same family)
☐ \$75.00 – One parent

REGULAR RATE (postmarked after April 29, 2016)

- ☐ \$200.00 – Agency-affiliated or other professional
☐ \$120.00 – Parenting couple (two parents from the same family)
☐ \$95.00 – One parent

I ☐ will ☐ will not be attending the banquet on Wednesday.
I ☐ will ☐ will not be attending the Family Fun Night dinner on Thursday.

OPTION 2: A LA CARTE REGISTRATION (SELECT ONE)

☐ **Wednesday, June 15 ONLY** (Includes: opening keynote general session, afternoon break, one workshop and Recognition Banquet)

EARLY BIRD (postmarked on or before April 29, 2016)

- ☐ \$100.00 – Agency-affiliated or other professional
☐ \$45.00 – Parenting couple (two parents from the same family)
☐ \$35.00 – One parent

REGULAR RATE (postmarked after April 29, 2016)

- ☐ \$120.00 – Agency-affiliated or other professional
☐ \$65.00 – Parenting couple (two parents from the same family)
☐ \$55.00 – One parent

I ☐ will ☐ will not be attending the banquet on Wednesday.

☐ **Thursday, June 16 ONLY** (Includes: continental breakfast, afternoon break, Family Fun Night dinner and up to four concurrent workshops)

EARLY BIRD (postmarked on or before April 29, 2016)

- ☐ \$100.00 – Agency-affiliated or other professional
☐ \$45.00 – Parenting couple (two parents from the same family)
☐ \$35.00 – One parent

REGULAR RATE (postmarked after April 29, 2016)

- ☐ \$120.00 – Agency-affiliated or other professional
☐ \$65.00 – Parenting couple (two parents from the same family)
☐ \$55.00 – One parent

I ☐ will ☐ will not be attending the Family Fun Night dinner on Thursday.

☐ **Friday, June 17 ONLY** (Includes continental breakfast, one workshop and closing keynote general session)

EARLY BIRD (postmarked on or before April 29, 2016)

- ☐ \$80.00 – Agency-affiliated or other professional
☐ \$25.00 – Parenting couple (two parents from the same family)
☐ \$15.00 – One parent

REGULAR RATE (postmarked after April 29, 2016)

- ☐ \$100.00 – Agency-affiliated or other professional
☐ \$45.00 – Parenting couple (two parents from the same family)
☐ \$25.00 – One parent

ADD ONS:

☐ **CHILD CARE/TEEN CARE** (\$50 per child/teen) _____
(See page 15 for Child/Teen Care Registration Form). Child care/teen program registrations INCLUDE Thursday's Family Fun Night Dinner (in addition to other meals and snacks listed on the Child/Teen Care Registration Form).

☐ **ADDITIONAL BANQUET TICKETS** (\$20/person) _____
Extra banquet tickets may be purchased for guests not registered for the conference or child care/teen programs.

☐ **ADDITIONAL FAMILY FUN NIGHT DINNER TICKETS** (\$20/adult; \$10/child) _____
Extra Family Fun Night Dinner tickets may be purchased for guests not registered for the conference or child care/teen programs.

☐ **DISCOUNT WATERPARK TICKETS FOR FAMILY FUN NIGHT** (NEEDED FOR NON-KALAHARI GUESTS ONLY) (\$25.00/person) _____
Extra discount waterpark tickets may be purchased for non-Kalahari guests or guests not registered for the conference or child care/teen programs for THURSDAY NIGHT ONLY.

Payment Options: Complete **one form per person** and attach check or money order made payable to *Diakon - SWAN, LLC*, or complete credit card information below and mail to **Conferencing, Diakon/FDR, 471 JPL Wick Drive, Harrisburg, PA 17111**

Credit Card Information:

☐ MasterCard ☐ Visa ☐ Discover

Card # _____ Exp. Date _____

Verification code (3-4 digits on back of card) _____

Cardholder Name _____

Cardholder Address & Phone Number _____

Authorized Signature _____

TOTAL REGISTRATION FEE: \$ _____

TOTAL CHILD CARE/TEEN REGISTRATIONS: \$ _____

ADDITIONAL BANQUET TICKETS/FAMILY FUN NIGHT DINNER TICKETS: \$ _____

DISCOUNT WATERPARK: \$ _____

TOTAL AMOUNT DUE: \$ _____

Child/Teen Care Program Information

Child Care and Teen Registration

We are pleased to provide on-site child care, as well as activities for older children. Additional forms and payments are required if you are requesting child care. A Child/Teen Care Registration Form (included below) must be completed for EACH child and teen who is participating in the sponsored activities. **Child/teen care is offered on a first-come basis. The deadline for child/teen care registration is April 29, 2016.** All child/teen care registrations received before April 29, 2016 will receive an informational confirmation packet. Permission forms from this packet must be filled out and brought with you to the conference. **Drop-in care is NOT available.** Children and teens must be preregistered to receive care.

Child Care and Teen Activities

Ages infant through 11: Child care will be available for the first 80 children registered. The rate is \$50 per child for the entire conference.

Ages 12 through 17: This supervised program will include a workshop and other special activities. The teen program is limited to the first 50 youths registered. Teens

must be no older than 17 at the time of the conference. The rate is \$50 per youth for the entire conference.

Meals: Daily snacks, Wednesday dinner, Thursday breakfast, lunch, Family Fun Night dinner and Friday breakfast will be provided. Parents whose children are unable to eat table food must provide food (i.e., formula, baby food, bottles, special diets, allergies, etc.).

Activities: Activities will be provided for children and teens. Swimming will be available for children ages 8 to 17.

Medications: Parents are responsible for administering medications to children. **Child care staff will not administer medications.**

No walk-ins will be accepted for either group. Children and teens are required to attend all activities while their parents or caregivers are at the conference.



Child/Teen Care Registration Form

Please complete **one form per child/teen**. Photocopy the form for additional children/teens if necessary.

FEE: \$50 per child or teen includes daily snacks, meals and activities for the duration of the conference.

Parents must provide food for children who are unable to eat table food (i.e., formula, baby food, bottles, special diets, allergies, etc.).

Child/teen care staff will **NOT** administer medications.

THE DEADLINE TO REGISTER CHILDREN/TEENS IS APRIL 29, 2016.

☐ Child care for children ages infant through 11 years **OR** ☐ Teen program for children ages 12–17 years

Child's Name _____ Age as of June 15, 2016 _____
First Middle Initial Last

Parent/Guardian Attending Conference _____

Home Phone _____ Cellphone (in the event of an emergency) _____

Email _____

Dates care is needed: ☐ Wednesday, June 15 ☐ Thursday, June 16 ☐ Friday, June 17

Please describe any accommodations your child will need to fully participate in child care activities:

Please list any dietary restrictions your child may have:

Please disclose any medical conditions (failure to disclose this information could result in removal from the child/teen care program):

Please list anything that would be helpful for the child/teen care staff to know about your child (likes, dislikes, fears, allergies, medications, etc.):

For child/teen care registration to be complete:

☐ Complete form. **One per child/teen.** ☐ To secure a space for your child, all registrations **must** be accompanied by payment.

☐ Attach payment. **NOTE:** Make check payable to: *Diakon – SWAN, LLC*. ☐ Enclose form and payment with your completed conference registration form.

An informational confirmation packet will be forwarded to you if the completed child/teen care registration form(s) and payment are received by April 29, 2016. You will need to complete the forms in the information packet and bring them with you to the conference. **No child/teen care registrations will be accepted after April 29, 2016.**



Scholarship Information